



**Office of Children
and Family Services**

**Report to the Governor and
Legislature on the Kinship
Guardianship Assistance Program**

2016

Table of Contents

Introduction.....	2
Background.....	3
Reporting Requirements.....	4
Summary of Data Reported by Districts.....	5
List of Tables.....	7
Table 1: Number of Children Entering KinGAP 2016	
Table 2: Applications for KinGAP Assistance 2016	
Table 3: Ages of Children at KinGAP Entry 2016	
Table 4: Fair Hearings	
Table 5: Changes in Permanent Exits	
Table 6: Percentage of Change in Children Placed Directly With a Relative or Other Suitable Adult under Article 10 (Non-LDSS Custody) 2016	
Table 7: Average Length of Stay	
OCFS KinGAP Activities.....	Appendix

The Kinship Guardianship Assistance Program

Introduction

The Kinship Guardianship Assistance Program (KinGAP) is a federally, state and locally supported program for children in kinship foster care. The program provides financial assistance to related caregivers who assume legal guardianship of children who were formerly their foster children. Under this program, most children receive medical coverage.

The program's purpose is to find permanent homes with relatives for foster children who do **not** have a discharge goal of returning to their parent or of being adopted. KinGAP assesses the child and the prospective relative guardian's eligibility for assistance payments. They consider legal, clinical and assessment considerations before proceeding with a kinship guardianship assistance arrangement.

KinGAP also assists eligible relatives by providing up to \$2,000 per child as part of the Non-Recurring Guardianship Expenses Program for payment of the costs of securing letters of guardianship of the foster child. KinGAP assists youth who are at least 16-years-old after they leave foster care by making independent living services and education and training vouchers available to support permanency and to prepare the child to live independently after the kinship guardianship ends.

KinGAP is available for foster children who are legally freed for adoption and those who are not. For this reason, the program is appealing for related foster parents because their guardianship does not require termination of parental rights. If children are not legally freed, kinship care keeps existing family connections intact, including the children's rights of association with siblings, grandparents, and other extended family members. Legal guardianship also leaves open the possibility that children might someday return home to their biological parents, should the issues that brought them into foster care be resolved.

Background

In October 2008, the federal Fostering Connections to Success and Increasing Adoptions Act (P.L. 110-351) created an option for states to provide financial assistance to relatives caring for foster children and become legal guardians of those children. The federal law allowed states to use federal funds (under Title IV-E of the Social Security Act) for subsidies to guardians of eligible children.

New York's subsidized guardianship assistance program was implemented on April 1, 2011, as a result of Part F of Chapter 58 of the Laws of 2010 (Chapter 58) entitled "Kinship Guardianship Assistance Program" (KinGAP) (see §§458-a--458-f of the SSL). Chapter 58 also amended the Family Court Act (FCA) and the Surrogate's Court Procedure Act, setting forth standards and procedures relating to the application for and issuance of letters of guardianship to prospective relative guardian(s). The New York State statute meets all federal requirements to operate KinGAP and to obtain federal reimbursement for eligible foster children. In addition, Chapter 58 includes provisions specific to New York State and extends eligibility for this program to eligible non-Title IV-E children.

In 2011, the New York State Office of Children and Family Services (OCFS) analyzed the program's impact and addressed issues and considerations necessary so that local social services districts (LDSSs) and voluntary foster care agencies (VAs) could implement and offer this program as a new permanency option to eligible families. OCFS consulted with social services district staff on their pre-implementation work and areas that would need to be addressed in OCFS's instructions to the field. Work was initiated with other impacted state agencies (Department of Health, Office of Temporary and Disability Assistance and the Office of Court Administration) about necessary policy and procedural changes.

In 2012, the implementation work continued with a focus on fine-tuning specific aspects of the program and providing technical assistance to LDSSs and VAs as they encountered more KinGAP cases. One area in particular where technical assistance was provided to LDSSs and VAs was in entering the correct systems codes in the various information technology systems at OCFS. Much of the technical assistance provided that year was to LDSSs in regards to coding questions and issues. As a result, OCFS designed a KinGAP Systems Tip Sheet to walk workers through the information that must be entered into the systems for a KinGAP case.

In 2013, OCFS received more case-specific questions as workers began to address more complex KinGAP cases. Some of the questions raised have resulted in OCFS revising KinGAP materials to address the issues encountered. Updated KinGAP information has been provided regularly via the KinGAP webpage (http://ocfs.ny.gov/kinship/background_and_process.asp) and email notifications. OCFS continues to provide a KinGAP general email mailbox (KinGAPHelp@ocfs.ny.gov) for questions.

In 2014, inquiries received via the KinGAP help shared mailbox continue to delve into case specific details, rather than asking for general information. The sophistication of the inquiries indicates a progression in understanding of KinGAP statewide. OCFS continues to monitor KinGAP data reports to assess progress and to address concerns. Revisions were completed to a "KinGAP Systems Tip Sheet" in response to feedback from New York City's Administration for Children's Services. An amendment to Title IV-E of the Social Security Act enacted by the federal Preventing Sex Trafficking and Strengthening Families Act (P.L. 113-183) that was signed into law on September 29, 2014. P.L. 113-183 provides that, under certain conditions, a successor guardian will be eligible to receive kinship guardianship assistance payments upon the death or incapacity of the relative guardian. OCFS formed a workgroup to formulate the implementation plan for HR 4980, Preventing Sex Trafficking and Strengthening Families Act, including the provision for KinGAP successor guardianship when the identified KinGAP guardian dies or becomes incapacitated.

In 2015, OCFS issued Administrative Directive 15-OCFS-ADM-15, *Continuation of the Kinship Guardianship Assistance Program (KinGAP) to a Successor Guardian*, to address continuation of KinGAP payments to a successor guardian if the original guardian receiving KinGAP payments dies or is incapacitated.

In 2016, OCFS again focused efforts on KinGAP as a permanency option with:

- **Training:**
Increasing the number of social services district and voluntary agency staff trained in the *Kinship Care Overview: Presenting Options to Kin/Relative Caregivers*. The training curriculum can be used as an overview to conduct group meetings with kin caregivers to explain their options when deciding how to meet the permanency needs of children to whom they are related.
- **Information:**
OCFS created a plain language pamphlet, *Know Your Options: Kin Caring for Children*, to introduce relatives/kin to the options under kinship care.
- **Collaboration:**
A statewide implementation team with representatives from LDSSs and VAs focused on kinship and KinGAP in 2016. The team put out a newsletter supporting the value of kinship placements and encouraging the use of KinGAP as a permanency option.
- **Support:**
OCFS awarded state funds to eight regional "Permanency Resource Centers" (PRCs) aimed at improving the safety, permanency and well-being of children in adoptive and legal guardianship families. The appendix of this report contains a comprehensive list of the KinGAP activities in 2016. Links are provided on the list to written materials developed for this program.

Also in 2016, OCFS updated 15-OCFS-ADM-15 by the issuance of Administrative Directive 16-OCFS-ADM-10 that addressed the eligibility of Successor Guardians to receive non-recurring guardianship expense payments

Reporting Requirements

In addition to establishing KinGAP, Section 12 of Part F of Chapter 58 of the Laws of 2010 sets forth reporting requirements for OCFS with regard to KinGAP and some additional relevant data. Each year, OCFS must report the required information to the governor, speaker of the Assembly, temporary president of the Senate, the minority leader of the Senate, the chair of the Assembly Committee on Children and Families, and the chair of the Senate Committee on Children and Families, detailing the implementation and progress of KinGAP.

The information is to be provided on a yearly basis and includes, but is not limited to the following:

- The total number statewide, and number of children in each LDSS, who have entered into KinGAP within that yearly reporting period
- The total number of children who have entered into KinGAP since implementation
- The total number of applications statewide, and number of KinGAP applications in each LDSS
- The total number of KinGAP applications denied and accepted by an LDSS
- The ages of children entering into KinGAP

- The number of fair hearings requested by KinGAP applicants and recipients, including the reasons for such hearing requests
- The number of fair hearings held, the time frames within which decisions were rendered, and the number of fair hearings resolved in favor of the aggrieved party and the LDSS
- Changes since implementation of KinGAP in the percentage of foster care children adopted, reunified, and released to other permanency outcomes
- Changes since implementation of KinGAP in the percentage of children directly placed with relatives under Article 10 of the FCA
- Changes in the average length of stay in foster care

This report is the sixth annual since the start of KinGAP in April 2011. OCFS has seen a significant increase in the number of KinGAP applications and completed KinGAP arrangements in the past year, and expects this number to continue to rise in 2017, as LDSSs and VAs become more familiar with the program and its benefits. OCFS has worked hard over the years to assist LDSSs and VAs with entering their KinGAP activity codes into the appropriate OCFS data systems to provide an accurate picture of the KinGAP work they have completed.

The remainder of this report will focus on the data collected as required by Chapter 58.

Summary of Data Reported by Districts

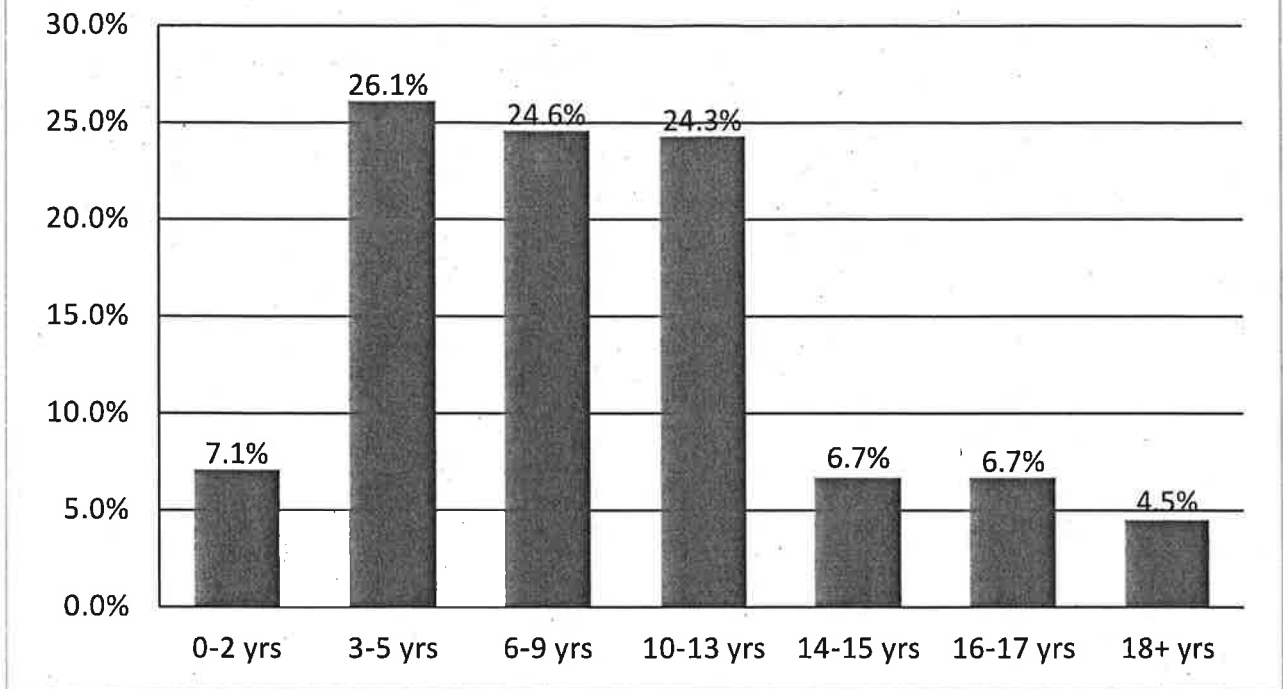
The data reported on the tables included in this report are based on the data entered by LDSSs in the OCFS system of record, CONNECTIONS.

In 2016, 448 children entered the KinGAP program; 354 children in New York City and 94 from the rest of the state. Since the start of the KinGAP program in April 2011, 1,519 children have achieved permanency and have been discharged from foster care to a KinGAP arrangement (complete detail included on Table 1).

Based on CONNECTIONS data, between January 1, 2016, and December 31, 2016, there were a total of 434 KinGAP applications received. Out of those applications, 358 were received by New York City and 16 by counties (including the St. Regis Mohawk Tribe) in the rest of the state. In 2016, in addition to New York City, applications were received in 17 counties including; Allegany, Cattaraugus, Chenango, Dutchess, Franklin, Nassau, Oneida, Onondaga, Orange, Oswego, Putnam, St. Lawrence, St. Regis Mohawk Tribe, Suffolk, Tompkins, Ulster, and Westchester. No KinGAP applications were denied. Statewide, 405 KinGAP applications were approved and 29 are pending (complete detail included on Table 2).

KinGAP continues serving children at a variety of ages, from less than two years old to older than 18 years of age at the time of their entry into KinGAP. Of the children who entered KinGAP in 2016, 32 children were between 0-2 years of age, 117 were ages 3-5, 110 ages 6-9, 109 ages 10-13, 30 ages 14-18, 30 ages 16-17 and 20 were age 18 and older. The majority of children entering the program were ages 3-5; the second-largest group was ages 6-9. The smallest number of children entering were in the 18-and-older range (complete detail included on Table 3).

Age of Children at Entry to KinGAP 2016



In 2016, there was one fair hearing request received by OCFS on a KinGAP application. (Table 4). The case was coded as kinship. At the hearing it was determined that the appellant was seeking retroactive foster care reimbursement payments. The issue in the case was the delay in the Court's appointment of the appellant as guardian. The monies owed were in actuality foster care reimbursement payments. The case was settled with a stipulation for the LDSS to provide retroactive foster care reimbursement payments for the period when foster care reimbursement payments stopped to the date of commencement of the KinGAP payments.

Between 2011 and 2016, the percentage of all exits from relative foster care to KinGAP increased from 0.1 percent to 21.1 percent. In addition, the number of all permanent exits from all foster care settings since KinGAP implementation was 9,298 as compared to 12,591 during the baseline year of 2011. (Table 5, Part A and Part B).

Between 2011 and 2016, there has been a significant increase of 49.3 percent in the number of children placed directly (in the direct legal custody) with a relative or other suitable adult under Article 10¹ (non-LDSS custody). This increase equates to 719 more children with direct relative placements in 2016 as compared to 2011. In New York City, the number of children directly placed with relatives decreased

¹ Prior to November 7, 2011, there was one dispositional code (62) that was used for both relative and non-relative direct-custodial placements; therefore, there was no way to separate out the relative from the non-relative data, though it is thought that most of these direct placements were with relatives. As of November 7, 2011, the use of dispositional code 62 was no longer allowed and districts were given two codes to separate out Article 10 direct custodial placements with relatives (88) and non-relatives (89).

48.9 percent, from 274 in 2011 to 140 in 2016. In the rest of the state, the number of children directly placed with relatives increased 72 percent from 1,185 in 2011 to 2,038 in 2016.

Of the 1,459 children who were placed directly in the legal custody of relatives in 2011, 321 children moved to either relative foster care (98 children) or non-relative foster care (223 children) within 12 months of the direct relative placement. In comparison, of the 2,304 children who were placed directly with relatives in 2015, 405 children moved to either relative foster care (99 children) or non-relative foster care (306 children). In 2015, 2,304 children were placed directly with relatives (Table 6).

The average length of stay for children exiting all foster care settings decreased 7.7 percent from the baseline period of 2011, from 30.7 months to 28.35 months in 2016. The average length of stay for children exiting foster care from approved relative homes decreased 0.3 percent, from 33.9 months in 2011 to 33.8 months in 2016 (Table 7, Parts A and B). Of the 374 children exiting care to KinGAP in 2016, the average length of stay was 35.68 months (Table 7, Part C).

List of Tables

Table 1: Number of Children Entering KinGAP 2016

Responds to § 12, subsection (a) of the statute²: “the total number, and number per local social services district, of children who have entered into the kinship guardianship assistance program within the yearly reporting period, as well as the total cumulative number of children in the program.”

Table 2: Applications for KinGAP Assistance 2016

Responds to § 12, subsection (b) of the statute: “the total number, and number per local social services district of applications for kinship guardianship assistance, including the number of applications denied and the number accepted by the local social services district.”

Table 3: Ages of Children at KinGAP Entry 2016

Responds to § 12, subsection (c) of the statute: “the ages of children entering into the kinship guardianship assistance program.”

Table 4: Fair Hearings

Responds to § 12, subsection (d) of the statute: “the number of fair hearings requested by applicants for, and recipients of, kinship guardianship assistance, including the reasons for such hearing requests, the number of fair hearings held, the time frames within which decisions were rendered, and the number of fair hearings resolved in favor of the aggrieved party and in favor of the local social services district.”

² Part F of Chapter 58 of the Laws of 2010.

Table 5: Changes in Permanent Exits

Responds to § 12, subsection (e) of the statute: "changes since implementation of the kinship guardianship assistance program in: the percentage of foster children adopted, reunified, and released to other permanency outcomes." There are two parts to this table:

Table 5, Part A: Changes in Permanent Exits From All Foster Care Settings Since KinGAP Implementation 2016

Table 5, Part B: Changes in Permanent Exits From Approved Relative Settings Since KinGAP Implementation 2016

Table 6: Percentage Change in Children Placed Directly With a Relative or Other Suitable Adult Under Article 10 (non-LDSS Custody) 2016

Responds to § 12, subsection (e) of the statute: "changes since implementation of the kinship guardianship assistance program in: ... the percentage of children directly placed with relatives under article ten of the family court act."

Table 7: Average Length of Stay

Responds to § 12, subsection (e) of the statute: "... the average length of stay in foster care." There are three parts to this table and the numbers in the table refer to months in foster care:

Table 7, Part A: Average Length of Stay in Months for Children Exiting Foster Care 2016

Table 7, Part B: Average Length of Stay in Months for Children Exiting Foster Care From an Approved Relative Home Setting 2016

Table 7, Part C: Average Length of Stay in Months for Children Exiting Foster Care From an Approved Relative Home Setting to KinGAP 2016

Appendix

OCFS KinGAP Activities

OCFS continued its efforts to support and promote KinGAP through the following activities in 2016:

- **Report to the Governor and Legislature on the Kinship Guardianship Assistance**
 - Reports to the governor and Legislature on KinGAP can be found at: <http://ocfs.ny.gov/kinship/reports.asp>
- **Regional Permanency Resource Centers**
 - Eight regional PRCs were approved in December of 2016. These centers will support the needs of post adoption and post guardianship families. Five centers will serve 24 counties, and three centers are each serving all five boroughs of New York City. OCFS plans to approve seven additional centers in 2017 to cover an additional 27 counties.
- **Know Your Options: Kin Caring for Children (Pub. 5175)**
 - A plain-language pamphlet was created and published in December to introduce relatives/kin to the options under kinship care.
- **Electronic Application**
 - Development of an electronic system for submission of KinGAP applications and agreements with an anticipated rollout in 2017.
- **KinGAP HELP Mailbox**
 - A dedicated mailbox continues to receive questions regarding KinGAP. The mailbox address is: KinGapHELP@ocfs.ny.gov
- **KinGAP Training**
 - *Kinship Care Overview: Presenting Options to Kin/Relative Caregivers*, for LDSS and VA staff
 - A computer-based KinGAP eligibility course continues to be made available by the State University at Buffalo's Center for Development of Human Services via a formal training contract.
 - The link to the KinGAP eligibility course introduction is <http://www.bsc-cdhs.org/cwe/> (click on KinGAP on the left side).
- **New York State KinGAP Webpage**
 - OCFS continues to add resources to the KinGAP webpage as they become available. The webpage is at: http://ocfs.ny.gov/kinship/background_and_process.asp
- **KinGAP Data Warehouse Reports**
 - KinGAP reports that coincide with the reports prepared for this report are available to LDSSs and state staff in the data warehouse through this URL: https://cognos.otda.state.nyenet/cognos/cgi-bin/cognosisapi.dll?b_action=xts.run&m=portal/cc.xts&m_folder=iF7E56BEB5C5E47799211DF7C3A543B20&m_folder2=m-i1A0098E2EA47410C81526688D34D5818

➤ **OCFS Monitoring**

- OCFS staff review reports to monitor the progress of KinGAP applications and completions and to offer support to counties.

Table 1: Number of Children Entering KinGAP

Report Date: 02/02/2017

Data As of Date: 01/26/2017

Year: 2016

LDSS	2016	Cumulative since 04/01/2011
ALBANY	1	5
ALLEGANY	5	20
BROOME	0	15
CATTARAUGUS	5	9
CAYUGA	0	14
CHAUTAUQUA	0	1
CHEMUNG	0	1
CHENANGO	0	0
CLINTON	0	0
COLUMBIA	0	12
CORTLAND	0	0
DELAWARE	0	0
DUTCHESS	3	12
ERIE	3	7
ESSEX	0	5
FRANKLIN	11	20
FULTON	0	0
GENESEE	0	0
GREENE	0	2
HAMILTON	0	0
HERKIMER	0	0
JEFFERSON	0	0
LEWIS	0	0
LIVINGSTON	0	10
MADISON	0	0
MONROE	0	1
MONTGOMERY	0	0
NASSAU	5	14
NIAGARA	0	0
ONEIDA	7	16
ONONDAGA	1	12
ONTARIO	0	0
ORANGE	12	38
ORLEANS	0	0
OSWEGO	7	7
OTSEGO	0	0
PUTNAM	1	1
RENSSELAER	0	0
ROCKLAND	0	4
ST LAWRENCE	7	18
SARATOGA	0	0
SCHENECTADY	0	13
SCHOHARIE	0	2
SCHUYLER	0	0
SENECA	0	0
STEUBEN	0	0
SUFFOLK	11	47

Table 2: Applications for KinGAP Assistance

Report Date: 02/02/2017

Data As of Date: 01/26/2017

Year: 2016

LDSS	Received & Pending		Approved *		Denied		Total	
	Applications	%	Applications	%	Applications	%	Applications	%
ALBANY	0		0		0		0	
ALLEGANY	2	66.7%	1	33.3%	0	0.0%	3	100.0%
BROOME	0		0		0		0	
CATTARAUGUS	5	100.0%	0	0.0%	0	0.0%	5	100.0%
CAYUGA	0		0		0		0	
CHAUTAUQUA	0		0		0		0	
CHEMUNG	0		0		0		0	
CHENANGO	1	100.0%	0	0.0%	0	0.0%	1	100.0%
CLINTON	0		0		0		0	
COLUMBIA	0		0		0		0	
CORTLAND	0		0		0		0	
DELAWARE	0		0		0		0	
DUTCHESS	0	0.0%	5	100.0%	0	0.0%	5	100.0%
ERIE	0		0		0		0	
ESSEX	0		0		0		0	
FRANKLIN	0	0.0%	3	100.0%	0	0.0%	3	100.0%
FULTON	0		0		0		0	
GENESEE	0		0		0		0	
GREENE	0		0		0		0	
HAMILTON	0		0		0		0	
HERKIMER	0		0		0		0	
JEFFERSON	0		0		0		0	
LEWIS	0		0		0		0	
LIVINGSTON	0		0		0		0	
MADISON	0		0		0		0	
MONROE	0		0		0		0	
MONTGOMERY	0		0		0		0	
NASSAU	0	0.0%	4	100.0%	0	0.0%	4	100.0%
NIAGARA	0		0		0		0	
ONEIDA	2	40.0%	3	60.0%	0	0.0%	5	100.0%
ONONDAGA	0	0.0%	2	100.0%	0	0.0%	2	100.0%
ONTARIO	0		0		0		0	
ORANGE	0	0.0%	16	100.0%	0	0.0%	16	100.0%
ORLEANS	0		0		0		0	
OSWEGO	0	0.0%	7	100.0%	0	0.0%	7	100.0%
OTSEGO	0		0		0		0	
PUTNAM	0	0.0%	1	100.0%	0	0.0%	1	100.0%
RENSSELAER	0		0		0		0	
ROCKLAND	0		0		0		0	
ST LAWRENCE	0	0.0%	3	100.0%	0	0.0%	3	100.0%
SARATOGA	0		0		0		0	
SCHENECTADY	0		0		0		0	
SCHOHARIE	0		0		0		0	
SCHUYLER	0		0		0		0	
SENECA	0		0		0		0	
STEUBEN	0		0		0		0	

Table 4: 2016 Year End Report KinGAP
OCFS Special Hearing Information System

<u>2016 Report</u>								
Hearing Type	Requests	Sched	Held	Issued	No Evidence	Defaults	Withdrawn	Settled
KINGAP	1	1	1	1	0	0	0	1

Table 3: Ages of Children at KinGAP Entry

Report Date:
02/02/2017

Data As of Date: 01/26/2017

LDSS	Age 2 Years and Under		3 - 5 Years of Age		6 - 9 Years of Age		10 - 13 Years of Age		14 - 15 Years of Age		16 - 17 Years of Age
	Children	%	Children	%	Children	%	Children	%	Children	%	Children
ALBANY	0	0.0%	0	0.0%	0	0.0%	1	100.0%	0	0.0%	0
ALLEGANY	1	20.0%	1	20.0%	1	20.0%	1	20.0%	0	0.0%	0
BROOME	0		0		0		0		0		0
CATTARAUGUS	0	0.0%	1	20.0%	2	40.0%	1	20.0%	1	20.0%	0
CAYUGA	0		0		0		0		0		0
CHAUTAUQUA	0		0		0		0		0		0
CHEMUNG	0		0		0		0		0		0
CHENANGO	0		0		0		0		0		0
CLINTON	0		0		0		0		0		0
COLUMBIA	0		0		0		0		0		0
CORTLAND	0		0		0		0		0		0
DELAWARE	0		0		0		0		0		0
DUTCHESS	0	0.0%	0	0.0%	1	33.3%	2	66.7%	0	0.0%	0
ERIE	0	0.0%	1	33.3%	0	0.0%	0	0.0%	1	33.3%	0
ESSEX	0		0		0		0		0		0
FRANKLIN	1	9.1%	2	18.2%	4	36.4%	3	27.3%	0	0.0%	0
FULTON	0		0		0		0		0		0
GENESEE	0		0		0		0		0		0
GREENE	0		0		0		0		0		0
HAMILTON	0		0		0		0		0		0
HERKIMER	0		0		0		0		0		0
JEFFERSON	0		0		0		0		0		0
LEWIS	0		0		0		0		0		0
LIVINGSTON	0		0		0		0		0		0
MADISON	0		0		0		0		0		0
MONROE	0		0		0		0		0		0
MONTGOMERY	0		0		0		0		0		0
NASSAU	0	0.0%	0	0.0%	2	40.0%	3	60.0%	0	0.0%	0
NIAGARA	0		0		0		0		0		0
ONEIDA	1	14.3%	3	42.9%	0	0.0%	2	28.6%	1	14.3%	0
ONONDAGA	0	0.0%	0	0.0%	0	0.0%	1	100.0%	0	0.0%	0
ONTARIO	0		0		0		0		0		0
ORANGE	1	8.3%	2	16.7%	5	41.7%	2	16.7%	1	8.3%	0
ORLEANS	0		0		0		0		0		0
OSWEGO	0	0.0%	1	14.3%	2	28.6%	3	42.9%	1	14.3%	0
OTSEGO	0		0		0		0		0		0
PUTNAM	0	0.0%	1	100.0%	0	0.0%	0	0.0%	0	0.0%	0
RENSSELAER	0		0		0		0		0		0
ROCKLAND	0		0		0		0		0		0
ST LAWRENCE	1	14.3%	4	57.1%	2	28.6%	0	0.0%	0	0.0%	0
SARATOGA	0		0		0		0		0		0
SCHENECTADY	0		0		0		0		0		0
SCHOHARIE	0		0		0		0		0		0
SCHUYLER	0		0		0		0		0		0

Table 5, Part A: Changes in Permanent Exits from all Foster Care Settings

Report Date: 02/02/2017

Data As of Date: 01/26/2017

LDSS	Percentage Children Adopted			Percentage Children Reunified			Percentage Children w Kinship Guardianship Assistance			Cha
	Baseline Period (Jan - Dec 2011)	Current Period (Jan - Dec 2016)	Change	Baseline Period (Jan - Dec 2011)	Current Period (Jan - Dec 2016)	Change	Baseline Period (Jan - Dec 2011)	Current Period (Jan - Dec 2016)	Change	
ALBANY	16.0%	14.7%	-8.2%	54.0%	47.3%	-12.4%	1.1%	0.8%	-27	
ALLEGANY	37.9%	21.7%	-42.7%	34.5%	43.5%	26.1%	0.0%	10.9%		
BROOME	28.6%	30.6%	6.9%	38.5%	38.0%	-1.3%	0.5%	0.0%	-10C	
CATTARAUGUS	29.2%	22.1%	-24.5%	38.5%	51.9%	35.1%	1.5%	6.5%	322	
CAYUGA	16.4%	23.8%	45.5%	50.9%	47.6%	-6.5%	1.8%	0.0%	-10C	
CHAUTAUQUA	29.9%	26.9%	-10.0%	42.5%	43.0%	1.1%	0.0%	0.0%		
CHEMUNG	20.0%	30.5%	52.5%	54.1%	44.1%	-18.6%	0.0%	0.0%		
CHENANGO	10.0%	10.5%	5.3%	80.0%	31.6%	-60.5%	0.0%	0.0%		
CLINTON	27.5%	45.3%	64.8%	32.5%	26.6%	-18.3%	0.0%	0.0%		
COLUMBIA	22.1%	23.7%	7.5%	53.2%	47.5%	-10.9%	0.0%	0.0%		
CORTLAND	25.0%	20.6%	-17.6%	43.4%	44.1%	1.6%	0.0%	0.0%		
DELAWARE	33.3%	43.2%	29.7%	54.2%	45.9%	-15.2%	0.0%	0.0%		
DUTCHESS	16.9%	21.9%	29.0%	59.6%	48.6%	-18.3%	0.0%	1.6%		
ERIE	24.4%	18.3%	-25.0%	36.9%	44.8%	21.3%	0.0%	0.5%		
ESSEX	18.2%	0.0%	-100.0%	45.5%	80.0%	76.0%	0.0%	0.0%		
FRANKLIN	13.0%	6.1%	-53.2%	66.7%	42.4%	-36.4%	0.0%	33.3%		
FULTON	8.7%	13.3%	53.3%	76.1%	56.7%	-25.5%	0.0%	0.0%		
GENESEE	13.5%	56.1%	315.1%	56.8%	29.3%	-48.4%	0.0%	0.0%		
GREENE	5.5%	27.8%	409.3%	54.5%	25.0%	-54.2%	0.0%	0.0%		
HAMILTON	100.0%			0.0%			0.0%			
HERKIMER	13.3%	8.9%	-33.3%	45.0%	46.7%	3.7%	0.0%	0.0%		
JEFFERSON	21.7%	38.6%	77.4%	39.1%	41.4%	5.9%	0.0%	0.0%		
LEWIS	33.3%	42.9%	28.6%	40.0%	28.6%	-28.6%	0.0%	0.0%		
LIVINGSTON	43.3%	22.5%	-48.1%	46.7%	40.0%	-14.3%	0.0%	0.0%		
MADISON	21.4%	25.8%	20.4%	67.9%	38.7%	-43.0%	0.0%	0.0%		
MONROE	16.0%	12.0%	-24.8%	41.8%	42.2%	1.0%	0.0%	0.0%		
MONTGOMERY	14.3%	3.0%	-78.8%	66.1%	42.4%	-35.8%	0.0%	0.0%		
NASSAU	6.8%	16.6%	142.5%	57.6%	40.0%	-30.5%	0.0%	3.4%		
NIAGARA	17.4%	20.0%	15.0%	44.3%	44.8%	0.9%	0.0%	0.0%		
ONEIDA	16.3%	9.2%	-43.3%	58.6%	49.5%	-15.6%	0.0%	3.8%		
ONONDAGA	29.1%	14.6%	-49.9%	28.6%	38.3%	34.1%	0.0%	0.4%		
ONTARIO	15.2%	25.6%	69.2%	54.5%	43.6%	-20.1%	0.0%	0.0%		
ORANGE	17.6%	24.9%	41.5%	55.3%	44.4%	-19.8%	0.0%	7.1%		
ORLEANS	4.0%	4.0%	0.0%	52.0%	60.0%	15.4%	0.0%	0.0%		
OSWEGO	9.6%	12.0%	24.8%	50.0%	48.0%	-4.0%	0.0%	14.0%		
OTSEGO	11.1%	5.6%	-50.0%	38.9%	38.9%	0.0%	0.0%	0.0%		
PUTNAM	60.0%	20.0%	-66.7%	30.0%	65.0%	116.7%	0.0%	5.0%		
RENSSELAER	15.3%	24.1%	57.1%	58.2%	57.0%	-2.1%	0.0%	0.0%		
ROCKLAND	15.9%	7.0%	-56.0%	63.5%	53.5%	-15.8%	0.0%	0.0%		
ST LAWRENCE	28.4%	18.0%	-36.8%	54.1%	24.7%	-54.3%	0.0%	7.9%		
SARATOGA	2.3%	24.1%	962.1%	75.0%	58.6%	-21.8%	0.0%	0.0%		

Table 6: Percentage Change in Children Placed Directly with a Relative or Other Suitable Adult Under Article 10 (non-LDSS Custody)

LOSS	2011				2015				2016	
	Number of Children Directly Placed with Relative for First Time	Moved to Foster Relative Home Within 1 Year	Moved to Foster Non-Relative Home within 1 Year	Average Days Between Direct Placement and Move to Foster Care	Number of Children Directly Placed with Relative for First Time	Moved to Foster Relative Home Within 1 Year	Moved to Foster Non-Relative Home within 1 Year	Average Days Between Direct Placement and Move to Foster Care	Number of Children Directly Placed with Relative for First Time	% Change in First Direct Placements with Relative (2011-2016)
ALBANY	34	8	8	139	36	0	17	113	59	64.7%
ALLEGANY	2	0	0	0	16	0	6	135	0	-100.0%
BROOME	2	0	0	0	2	0	0	0	0	-100.0%
CATTARAUGUS	9	1	1	200	43	5	1	47	38	322.2%
CAYUGA	32	4	3	188	24	0	4	186	21	-34.4%
CHAUTAUQUA	0	0	0	0	0	0	0	0	3	
CHEMUNG	4	1	0	79	3	0	0	0	33	725.0%
CHENANGO	0	0	0	0	18	2	1	152	17	
CLINTON	13	1	3	129	23	0	2	173	23	76.9%
COLUMBIA	0	0	0	0	10	0	2	26	15	
CORTLAND	1	0	0	0	27	4	5	122	32	3,100.0%
DELAWARE	3	0	1	291	35	0	7	88	10	233.3%
DUTCHESS	21	0	3	17	18	2	2	115	48	128.8%
ERIE	278	0	55	154	546	16	98	143	584	110.1%
ESSEX	2	0	0	0	3	0	0	0	7	250.0%
FRANKLIN	0	0	0	0	17	4	0	130	11	
FULTON	0	0	0	0	1	0	0	0	0	
GENESEE	6	0	2	230	2	0	0	0	2	-66.7%
GREENE	11	0	1	132	6	0	0	0	6	-45.5%
HAMILTON	0	0	0	0	0	0	0	0	0	
HERKIMER	17	2	4	207	9	0	2	213	30	76.5%
JEFFERSON	19	1	4	169	60	4	8	171	44	131.6%
LEWIS	0	0	0	0	13	1	0	105	9	
LIVINGSTON	2	1	0	221	29	6	3	188	21	950.0%
MADISON	11	0	0	0	0	0	0	0	0	-100.0%
MONROE	70	0	8	142	112	0	20	119	101	44.3%
MONTGOMERY	1	0	0	0	8	0	3	213	5	400.0%
NASSAU	3	0	0	0	11	3	0	308	0	-100.0%
NIAGARA	54	2	10	112	76	0	13	146	74	37.0%
ONEIDA	2	0	0	0	0	0	0	0	0	-100.0%
ONONDAGA	54	2	10	114	142	4	21	179	99	83.3%
ONTARIO	3	0	0	0	14	0	2	195	9	200.0%
ORANGE	39	1	9	28	26	0	4	158	27	-30.8%
ORLEANS	13	1	4	42	24	0	3	230	15	15.4%
OSWEGO	14	2	3	90	69	1	9	40	44	214.3%
OTSEGO	2	0	0	0	12	0	2	150	15	650.0%
PUTNAM	0	0	0	0	2	0	0	0	0	
RENSSELAER	1	0	1	180	5	0	0	0	0	-100.0%
ROCKLAND	22	0	5	87	19	0	0	0	28	27.3%
ST LAWRENCE	10	0	1	244	57	1	3	272	58	480.0%
SARATOGA	0	0	0	0	9	0	1	72	0	
SCHENECTADY	26	1	3	213	40	0	4	208	38	46.2%
SCHOHARIE	6	0	0	0	18	0	3	39	28	366.7%
SCHUYLER	2	0	2	247	0	0	0	0	0	-100.0%
SENECA	2	0	0	0	2	0	0	0	0	-100.0%
STEBEN	11	1	2	166	37	0	5	161	19	72.7%
SUFFOLK	232	24	25	161	329	23	25	130	288	24.1%
SULLIVAN	0	0	0	0	0	0	0	0	0	
TIOGA	0	0	0	0	0	0	0	0	2	
TOMPKINS	12	8	2	198	30	5	3	99	31	158.3%
ULSTER	15	1	1	22	31	1	2	172	38	153.3%
WARREN	6	0	0	0	6	0	0	0	1	-83.3%
WASHINGTON	13	0	3	55	2	0	0	0	11	-15.4%
WAYNE	1	0	1	210	0	0	0	0	5	400.0%
WESTCHESTER	97	11	17	154	109	7	17	214	71	-28.8%
WYOMING	6	0	0	0	13	0	0	0	14	133.3%
YATES	0	0	0	0	11	0	0	0	7	
ST REGIS	1	0	0	0	0	0	0	0	0	-100.0%
Rest of State Total	1,185	71	192	137.0	2,155	89	298	141.5	2,038	72.0%
New York City Total	274	27	31	133	149	10	160	160	140	-48.9%
New York State Total	1,459	98	223	138.2	2,304	99	306	143.0	2,178	49.2%

* Empty space represents N/A- Not applicable since the given value cannot be calculated

Table 7, Part A: Average Length of Stay in Months for Children Exiting

Report Date: 02/02/2017

Data As of Date: 04/26/2017

LDSS	Number of Children Exiting Foster Care Baseline Period (Jan - Dec 2011)	Average Length of Stay Baseline Period (Jan - Dec 2011)	Number of Children Exiting Foster Care Current Period (Jan - Dec 2016)	Average Length of Stay Current Period (Jan - Dec 2016)
ALBANY	187	21	129	
ALLEGANY	29	28	46	
BROOME	182	29	108	
CATTARAUGUS	65	18	77	
CAYUGA	55	18	42	
CHAUTAUQUA	87	23	93	
CHEMUNG	85	17	59	
CHENANGO	10	23	19	
CLINTON	40	28	64	
COLUMBIA	77	26	59	
CORTLAND	76	23	34	
DELAWARE	24	25	37	
DUTCHESS	183	24	183	
ERIE	566	25	596	
ESSEX	11	12	20	
FRANKLIN	54	20	33	
FULTON	46	13	30	
GENESEE	37	22	41	
GREENE	55	20	36	
HAMILTON	1	67	0	
HERKIMER	60	19	45	
JEFFERSON	69	19	70	
LEWIS	15	30	7	
LIVINGSTON	30	25	40	
MADISON	28	25	31	
MONROE	438	25	358	
MONTGOMERY	56	24	33	
NASSAU	337	16	145	
NIAGARA	115	24	105	
ONEIDA	227	21	184	
ONONDAGA	203	30	261	
ONTARIO	33	18	39	
ORANGE	262	30	169	
ORLEANS	25	19	25	
OSWEGO	52	21	50	
OTSEGO	18	25	18	
PUTNAM	10	25	20	
RENSSELAER	98	29	79	
ROCKLAND	63	21	43	
ST LAWRENCE	109	21	89	
SARATOGA	44	18	29	
SCHENECTADY	218	20	109	
SCHOHARIE	27	27	18	
SCHUYLER	12	17	7	
SENECA	16	16	26	

Table 7, Part B: Average Length of Stay in Months for Children Exiting Foster Care Setting

Report Date: 02/02/2017

Data As of Date: 01/26/2017

LDSS	Number of Children Exiting Foster Care from an Approved Relative Foster Home Setting Baseline Period (Jan - Dec 2011)	Average Length of Stay Baseline Period (Jan - Dec 2011)	Number of Children Exiting Foster Care from an Approved Relative Foster Home Setting Current Period (Jan - Dec 2016)
ALBANY	8	25	1
ALLEGANY	1	35	6
BROOME	7	15	1
CATTARAUGUS	6	15	3
CAYUGA	5	12	1
CHAUTAUQUA	3	6	4
CHEMUNG	2	46	2
CHENANGO	0	0	2
CLINTON	2	5	3
COLUMBIA	10	32	2
CORTLAND	1	25	5
DELAWARE	1	16	3
DUTCHESS	11	12	12
ERIE	2	91	21
ESSEX	0	0	2
FRANKLIN	3	49	14
FULTON	0	0	1
GENESEE	0	0	0
GREENE	8	19	4
HAMILTON	0	0	0
HERKIMER	3	5	0
JEFFERSON	3	10	1
LEWIS	1	11	1
LIVINGSTON	0	0	4
MADISON	2	7	4
MONROE	0	0	0
MONTGOMERY	3	8	0
NASSAU	14	28	8
NIAGARA	11	31	5
ONEIDA	12	18	21
ONONDAGA	4	38	0
ONTARIO	0	0	0
ORANGE	30	37	36
ORLEANS	0	0	0
OSWEGO	0	0	0
OTSEGO	0	0	0
PUTNAM	1	10	1
RENSSELAER	2	8	4
ROCKLAND	2	24	9
ST LAWRENCE	16	25	5
SARATOGA	0	0	0
SCHENECTADY	6	49	7

Table 7, Part C: Average Length of Stay in Months for Children Exiting Foster Care from an Approved Relative Foster Home Setting to KinGAP

Report Date: 02/02/2017 Data As of Date: 01/26/2017 Year: 2016

LDSS	Number of Children Exiting Foster Care from an Approved Relative Foster Home Setting to KinGAP Current Period (Jan - Dec 2016)	Average Length of Stay Current Period (Jan - Dec 2016)
ALBANY	0	0
ALLEGANY	2	42
BROOME	0	0
CATTARAUGUS	1	22
CAYUGA	0	0
CHAUTAUQUA	0	0
CHEMUNG	0	0
CHENANGO	0	0
CLINTON	0	0
COLUMBIA	0	0
CORTLAND	0	0
DELAWARE	0	0
DUTCHESS	0	0
ERIE	3	28
ESSEX	0	0
FRANKLIN	7	18
FULTON	0	0
GENESEE	0	0
GREENE	0	0
HAMILTON	0	0
HERKIMER	0	0
JEFFERSON	0	0
LEWIS	0	0
LIVINGSTON	0	0
MADISON	0	0
MONROE	0	0
MONTGOMERY	0	0
NASSAU	0	0
NIAGARA	0	0
ONEIDA	3	18
ONONDAGA	0	0
ONTARIO	0	0
ORANGE	6	32
ORLEANS	0	0
OSWEGO	0	0
OTSEGO	0	0
PUTNAM	0	0
RENSSELAER	0	0